

## **CYTOTOXICITY AND GENOTOXICITY OF HEAVY METAL AND CYANIDE-CONTAMINATED WATERS IN SOME REGIONS FOR PRODUCTION AND PROCESSING OF ORE IN BULGARIA**

E. IVANOVA<sup>1</sup> \*, T. STAYKOVA and I. VELCHEVA

<sup>1</sup>*University of Plovdiv, Faculty of Biology,<sup>1</sup> Department of Developmental Biology, Section of Genetics, BG-4000 Plovdiv, Bulgaria*

<sup>2</sup>*University of Plovdiv, Faculty of Biology, Department of Ecology, BG-4000 Plovdiv, Bulgaria*

### **Abstract**

IVANOVA, E., T. STAYKOVA and I. VELCHEVA, 2008. Cytotoxicity and genotoxicity of heavy metal and cyanide-contaminated waters in some regions for production and processing of ore in Bulgaria. *Bulg. J. Agric. Sci.*, 14: 262-268

This study generalizes the data of investigations on cytotoxic and genotoxic effect of heavy metal- and cyanide-contaminated waters in 2001, 2003 and 2005. The water samples were collected from different water sources in the region of "Assarel-Medet" Copper Refinery Works. The contents of copper, arsenic, cadmium, lead, and cyanides (mg.dm<sup>-3</sup>) were determined using the method of automatic photometry. The *Allium cepa* and *Pisum sativum* plant systems were used for testing of the cytotoxicity and genotoxicity of heavy metals and cyanides. A lower mitotic index and a higher frequency of chromosome aberrations were established in all test samples than in the control ones. Chromosome fragments, anaphase and telophase bridges, micronuclei, lagging chromosomes and C-mitotic effect in cells were observed. It was concluded that the pollution found in the regions for production and processing of ore has cytotoxic and genotoxic effect on cells and it could be a potential threat to water ecosystems and human health.

*Key words:* cytotoxicity, genotoxicity, biomonitoring, heavy metals, cyanides

### **Introduction**

The dangerous pollutants of the environment having a highly toxic effect on living organisms are lead, cadmium, copper, zinc and arsenic (Ormrod, 1988). The same are with proved mutagenic and carcinogenic effect (Boyadziev et al., 1990; Kovalchuk et al., 2001). The open-cast mining of ores and minerals is at the root of the mining industry in Bulgaria. Heavy metals (Pb, Zn, Cd, Cu, As) and cyanides are one of

the main components found in waste waters of many industrial and mining productions. Nowadays about 80% of the ferrous- and non-ferrous metal ores in the country are provided by the mines of "Elatzite" EAD, "Kremikovtzi AD and Assarel-Medet" EAD (Dimov and Hristov, 1998). These regions are subjected to anthropogenic pressure, associated with the presence of heavy metals in the environment. According to Dimov and Hristov (1998), a number of heavy metals were detected as permanent components in the ground

and surface waters of these regions, at levels surpassing the maximum permissible concentrations.

The investigations made by various authors pointed out that industrial pollution induced reduction in the number of populations and restricted the distribution of species from the fauna of these regions (Mecheva et al., 1987).

There is a number of studies concerning the problem of the relationship between the increased heavy-metal amount in nature and industrial environment, their mutagenic and carcinogenic effects and the increased cases of malignant tumour formations in man. Mitrov and Chernozemski (1985), Vodenicharska et al. (1992), Tzonevski et al. (1998), Bruning and Chronz (1999), Chernozemski and Shishkov (2001), Ivanova et al. (2005) and others discussed the problem of the relationship between the heavy metal amounts in natural and industrial environment, the increased frequency of chromosome mutations and the carcinogenic processes in the organism.

The ecological monitoring uses different methods for establishing the degree of pollution and the effect of heavy metals and cyanides on organisms. A number of authors (Sabti, 1989; Smaka-Kinkl et al., 1996; Chang et al., 1997; Rank and Nielsen, 1998; Cotelle et al., 1999; Moraes and Jordao, 2001) suppose that different plant test systems are useful for the studying of the cytotoxicity and genotoxicity of heavy metals. It has been established that *Allium cepa* and *Pisum sativum* test systems are useful tools for detection of potentially genotoxic substances in water screening programs (Fiskesjo, 1985, 1993a, 1993b, 1994, 1997, Ivanova et al., 2002a, 2002b).

This study generalizes the data of the investigations on the cytotoxic and genotoxic effect of heavy metal- and cyanide-contaminated waters in 2001, 2003 and 2005.

## Materials and Methods

The water samples were collected from different water sources in the region of "Assarel-Medet" Copper Refinery Works: Panagyurishte town (water, taken from the municipal water supply system and from Luda

Yana River); a close region near Panagyurishte town (spring waters, used by the local population for drinking and irrigation); a region near the copper mine (spring waters and water from Assarelska River); the roads Panagyurishte-Sofia and Panagyurishte-Plovdiv (waters from roadside springs and from Luda Yana River) and they were tested by chemical and cytogenetic analysis. Tap water samples were used as control samples.

### Chemical water analysis

The contents of copper, arsenic, cadmium, lead, and cyanides ( $\text{mg}\cdot\text{dm}^{-3}$ ) were determined using the method of automatic photometry (apparatus SQ 118-Merk). The results for the contents of the heavy metals and cyanides tested were compared to the hygienic norms adopted for the country (maximum permissible concentrations—MPC) according to the Ordinance No 7/1986.

### Cytogenetic analysis

The *Allium cepa* plant system (Fiskesjo, 1985, 1988, 1995; Staykova et al., 2005) and the *Pisum sativum* plant system (Ivanova et al., 2002a, 2002b) were used for testing of the cytotoxic and genotoxic effects of heavy metals and cyanides. More than 40 000 *Allium* and *Pisum* root meristem cells have been studied during the cytogenetic investigation.

## Results and Discussion

The data generalized for the contents of Cu, As, Cd, Pb and cyanides as the maximum permissible concentrations (MPC) for these metals (according to Ordinance No 7/1986) are given in the Table 1.

We ascertained the high content of copper in a water sample from Assarelska River in 2005. The presence of Cd and CN was increased in most of the water samples studied during the three periods of this investigation. We established highest content of lead in the water samples collected from the roadside springs near the roads from Panagyurishte to Sofia and to Plovdiv, including Assarelska River, which crosses the Panagyurishte-Sofia road.

**Table 1****Content of heavy metals and cyanides in the water samples studied, mg.dm<sup>-3</sup>**

Period	Cu	As	Cd	Pb	CN
2001	< 0.05 – 0.06	< 0.05	< 0.025	0.1 – 4.5	0.011– 0.028
2003	< 0.05 – 0.09	< 0.05	< 0.025	0.1	0.0 – 0.025
2005	< 0.05– 0.17	≤ 0.05	≤ 0.025	0.3 – 3.8	0.011– 0.037
Bulgarian standards	0.1	0.05	0.01	0.05	0.0

**Table 2****Mitotic index (Im) and total frequency of chromosome aberrations, %**

Period	Mitotic index – Im		Total frequency of chromosome aberrations	
	Control samples	Test samples	Control samples	Test samples
2001	350	150 - 300	0.056	0.54 - 2.01
2003	447	261	0.09	0.157
2005	536 - 871	442 - 719	0 - 0.027	2.03 - 3.85

**Table 3****Frequency of different types of chromosome aberrations analyzed by the Allium test, %**

Period	Cells with micronuclei		Prophase with chromosome fragments		Anaphase bridges and chromosome fragments		Telophase bridges and chromosome fragments	
	Control samples	Test samples	Control samples	Test samples	Control samples	Test samples	Control samples	Test samples
2003	0.27	0.92	0	0.02	0-0.09	0.80	0	0.20
2005	0-0.018	0.27-2.82	0	0.02-0.17	0	0.11-0.98	0	0.097-0.20

Tables 2 and 3 present summarized results from the cytogenetic analysis.

The mitotic index (Im) is a parameter for the intensity of cell division. We established a lower mitotic index of all test samples than that of the control ones.

Taking into account the results from the chemical analysis, we suggested that the combined presence of heavy metals and cyanides in the waters tested, provoked an effect of reduction in the cell division rate (Table 2). These results confirm the opinion of Fiskesjo (1994) about the decrease of mitotic index in *Allium cepa*-roots growing in chemical contaminated waters. The lower value of Im was in correlation with the increase in the pollution obtained (Table 1 and 2). Studying the effect of heavy metals on the morphological and anatomical traits in some plants,

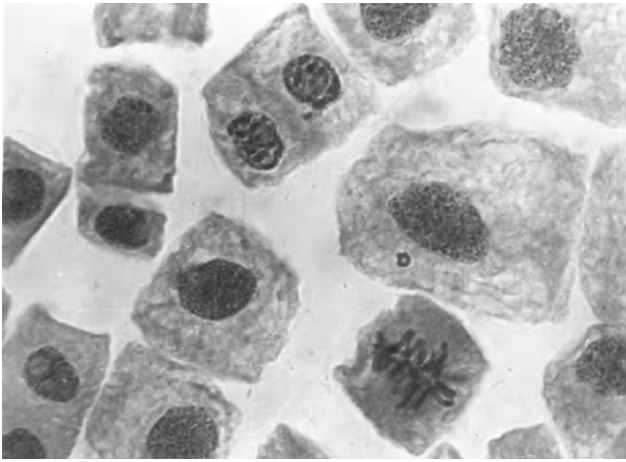
Dimitrova (1993) reported that the high concentrations of lead, zinc, cadmium and copper suppressed the growth of vegetative organs. Dimitrova and Ivanova (2003) also reported that the increased heavy metal amounts in soil decreased not only the growth of vegetative organs, but also the rate of their cell division, inducing chromosome aberrations in *Linum usitatissimum*. Different types of chromosome aberrations were established by means of cytogenetic analysis: chromosome fragments (in prophase, anaphase and telophase); anaphase bridges; telophase bridges and micronuclei (Table 3). Lagging chromosomes and C-mitotic effect in cells from some test samples were ascertained, too.

The total frequency of chromosome aberrations in the samples tested in comparison to the control ones

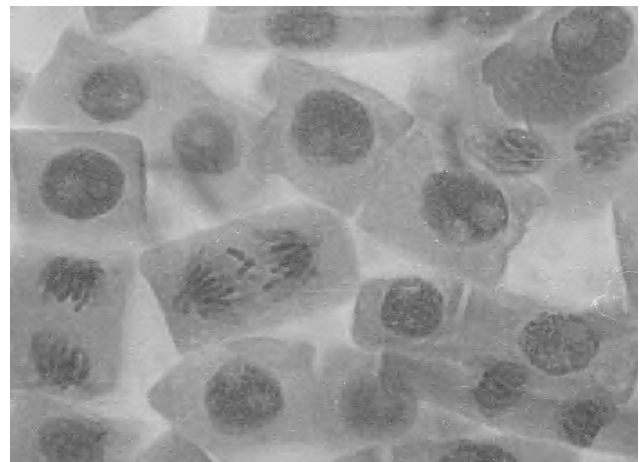
were 1.8 (2003) to 143 times (2005) higher – (Table 2), which proves a genotoxic effect of heavy metals and cyanides. It was interesting to notice that the lower frequency of chromosome mutations in 2003 in comparison to the other two years (2001 and 2005) was in correlation with the lower value of a lead and cyanide contamination in the same period. These results are in agreement with Kovalchuk et al. (2001) who

reported that pollution with heavy metal salts induced an increase in the frequency of intrachromosomal mutations. (Figures 1, 2, 3, 4, 5 and 6)

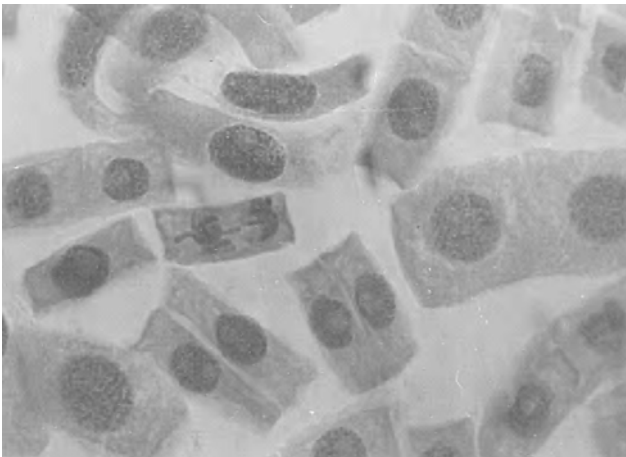
The micronucleus test showed the presence of micronuclei in 0.27% (2003) and 0.018% (2005) of the cells from the control samples; in 0.92% (2003) and in 0.27% to 2.82% (2005) of the cells, respectively (Table 3.). The comparative analysis of these



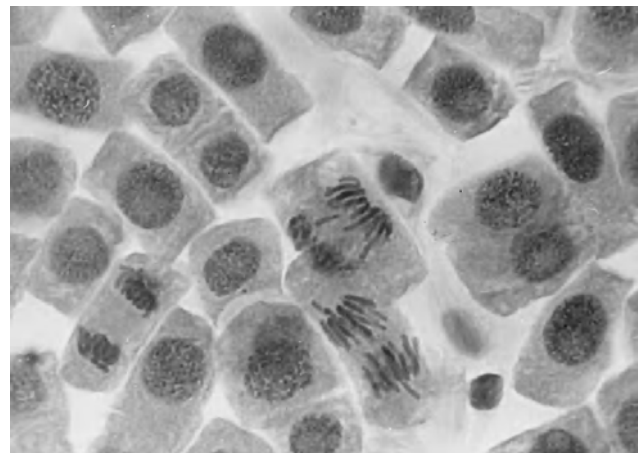
**Fig. 1.** Cytogenetic effect of heavy-metal- and cyanide-polluted waters in *Allium cepa* root meristems, x 400. Prophase with micronucleus; prophase with ring chromosome fragment; late telophase with chromosome fragment



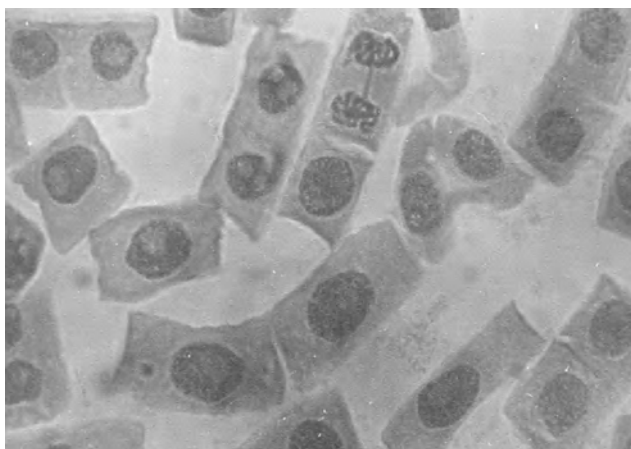
**Fig. 3.** Cytogenetic effect of heavy-metal- and cyanide-polluted waters in *Allium cepa* root meristems, x 400. Anaphase with chromosome fragments



**Fig. 2.** Cytogenetic effect of heavy-metal and cyanide-polluted waters in *Allium cepa* root meristems, x 400. Anaphase with broken chromosome bridge and lagging chromosome



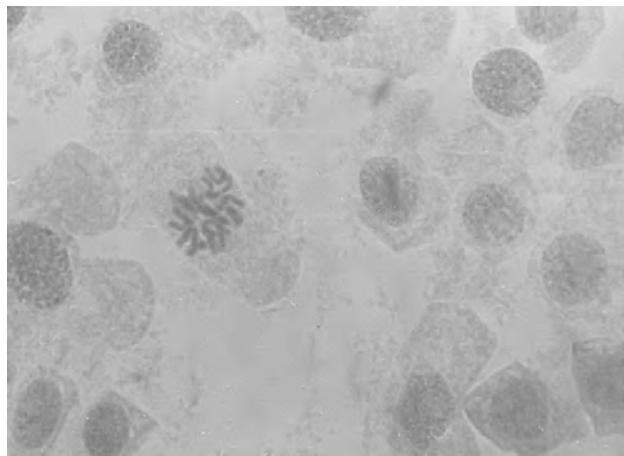
**Fig. 4.** Cytogenetic effect of heavy-metal- and cyanide-polluted waters in *Allium cepa* root meristems, x 400. Anaphases with chromosome fragment and lagging chromosomes



**Fig. 5. Cytogenetic effect of heavy-metal- and cyanide-polluted waters in *Allium cepa* root meristems, x 400. Prophase with micronucleus; telophase bridge**

data demonstrated over a triple increase in 2003 and from 15 to 157 time-increase in 2005 in the micronuclei frequency in the tested water. In our opinion, the high micronuclei frequency observed in the test samples was induced either by the immobility of large acentric fragments or by the lagging of whole chromosomes. The lagging of chromosomes was caused by disturbances in the mitotic spindle or the centromere. In this connection, it was said by Fiskesjö (1994) that the chromosome lagging was induced by a weak C-mitotic effect and they indicate a risk of aneuploidy. According to Schmid (1975); Fenech (1990); Ma et al., (1992) the occurrence of micronuclei (MNi) has been used as a single parameter for the recording of genotoxic damage. The screening of MNi is said to be a more rapid method than the screening of chromosomal aberration (Fiskesjö, 1997).

Among the other chromosome mutations, the cells with anaphase bridges and fragments were with the highest frequency (to 0.98%). We suggest that the anaphase and telophase bridges established, as well as the chromosome fragments resulted from different types of chromosome aberrations, associated with a loss of genetic material. Our suggestion corroborated the data reported by Hoga et al. (1991), who considered the anaphase bridges as obtained from struc-



**Fig. 6. Cytogenetic effect of heavy-metal and cyanide-polluted waters in *Allium cepa* root meristems, x 400. C – mitotic effect**

tural changes of deficiency- and translocation type, some of them surviving to late telophase, which is indicative of their stability. Using anaphase-telophase assay, Rank and Nielsen (1998) established that the genotoxicity correlates to the industrial load and the concentrations of the heavy metals (Pb, Ni, Cr, Zn, Cu, Cd) correlate with the toxicity. Chang et al. (1997) using *Allium cepa* test prove the genotoxic effect of a lead-contaminated soil, too. According to Boyadjiev et al. (1990), it was the lead that had embryotoxic and gonadotoxic effects and, the cadmium-teratogenic effect.

## Conclusions

Based on the data presented for the cytotoxic and genotoxic effect of the heavy metals and cyanides in tested waters, we could conclude that the pollution found in the regions for production and processing of ore is a potential threat to water ecosystems and to human health.

## References

- Boyadjiev, V., Ts. V. Alexieva, Z. K. Zaprianov, Y. T. Hadzhieva, M. I. Koleva, N. K. Tzacheva, P. V. Boyadjieva and P. O. Nikolova, 1990. Heavy metal Poisonings. *Medicina i*

- fizkultura*, Sofia, 242 pp. (Bg).
- Bruning, Ö. and C. Chronz**, 1999. Occurrence of Urinary Tract Tumors in Miners Highly Exposed to Dinitrofluorene. *YOEM*, **3**: 144-149.
- Chang, L., J. Meier and M. Smith**, 1997. Application of plant and earthworm bioassays to evaluate remediation of a lead-contaminated soil. *Arch. Environ. Contam. Toxicol.*, **32**:166-171.
- Chernozemski, I. and T. Shishkov**, 2001. Oncology. *SIELA-SOFT*. Sofia, pp. 15-21.
- Cot, S., J. F. Masfaraud and G. F. Ferard**, 1999. Assessment of the genotoxicity of contaminated soil with the *Allium/Vicia*-micronucleus and the *Tradescantia* –micronucleus assays. *Mutation. Research*, **426**: 167-171.
- Dimitrova, I. and E. Ivanova**, 2003. Effect of heavy metal-soil pollution on some morphological and cytogenetical characteristics of flax (*Linum usitatissimum*). *Journal of Balkan Ecology*, **6**: 212-218.
- Dimitrova, I.**, 1993. Studies of grass plants under conditions of industrial pollution with heavy metals and sulfur dioxide. *Author's summary of Ph.D. Dissertation*, "P. Hilendarski". Plovdiv University.
- Dimov, S. and S. Hristov**, 1998. Analysis of the ecological status and the opportunities for sustainable development of mining regions. *Minno delo i geologija*, **1**: 28-32. (Bg).
- Fenech, M.**, 1990. The cytokinesis-block micronucleus assay in nucleated cells. In: *Mutation and the Environment*, Part B, Mendelsohn M. L., R. J. Albertini, Eds., Wiley-Liss, New York, pp. 195-206.
- Fiskesjo, G.**, 1985. The *Allium* test as a standard in environmental monitoring. *Hereditas*, **102**: 99-112.
- Fiskesjo, G.**, 1988. The *Allium* test – an alternative in environmental studies: the relative toxicity of metal ions. *Mutation Research*, **197**: 243–260.
- Fiskesjo, G.**, 1993a. The *Allium* test – a potential standard for the assessment of environmental toxicity. In: *Environmental Toxicology and Risk Assessment*. Gorsuch/Dwyer/Ingersoll/LaPoint. ASTM, Philadelphia, PA., pp. 331-345.
- Fiskesjo, G.**, 1993b. The *Allium* test in Wastewater Monitoring. *An International Journal of Environmental Toxicology and Water Quality*, **8**: 291-298.
- Fiskesjo, G.**, 1994. *Allium* test II: assessment of a Chemical's Genotoxic Potential by Recording Aberrations in Chromosomes and Cell Division in Root Tips of *Allium cepa* L. *An International Journal of Environmental Toxicology and Water Quality*, **9**: 235-241.
- Fiskesjo, G.**, 1995. *Allium* test. *Methods in molecular biology. In vitro toxicity testing protocols*, **43**: 119–127.
- Fiskesjo, G.**, 1995. *Allium* test for screening chemicals; evaluation of cytological parameters. In: *Plants for Environmental Studies*. Lewis Publisher. Boca Raton, New York, pp. 307-333.
- Hoga, O., S. Bose and S. Sinha**, 1991. Vitamin C mediated minimization of Malathion and Rogor induced mitoinhibition and clastogeny. *Cytology*, **3**: 389-397.
- Ivanova, E., T. Staikova and I. Velcheva**, 2002a. Mutagenic effect of water polluted with heavy metals and cyanides on *Pisum sativum* plant *in vivo*. *Journal of Balkan Ecology*, **3**: 307-310.
- Ivanova, E., I. Velcheva, T. Staikova and P. Kostadinova**, 2002b. Somatostatic effect of heavy metal- and cyanide contaminated waters on a *Pisum sativum* L. plant system *in vivo*. *J. Balkan Ecol.*, **4**: 443-446.
- Ivanova, E., T. Staikova and I. Velcheva**, 2005. Cytogenetic testing of heavy metal and cyanide contaminated river waters in a mining region of Southwest Bulgaria. *Journal of Cell and Molecular Biology*, **4**: 99-106.
- Kovalchuk, O., V. Titov, B. Hohn and I. Kovalchuk**, 2001. A sensitive transgenic plant system to detect toxic inorganic compounds in the environment. *Nat. Biotechnol.*, **6**: 568-572.
- Ma T-H., J. Xu, W. Xia, X. Jong, W. Sun and G. Lin**, 1992. Proficiency of the *Tradescantia* – micronucleus image analysis system for scoring micronucleus frequencies and data analysis. *Mutat. Res.*, **270**: 39-44.
- Mecheva, R., M. Karapetkova and S. Gerasimov**, 1987. Heavy metal accumulation in bioindicator vertebrates in the region of Srednogorie. In: *First National Conference on the Problems of Biological Monitoring*, 1987. Inst. Zool., BAS, Sofia.
- Mitrov, G. and I. Chernozemski**, 1985. Nutrition and Cancer. *Medicina i fizkultura*, Sofia, pp. 67-98. (Bg).
- Moraes, D. and B. Jordao**, 2001. Evaluation of the genotoxic potential of municipal waste water discharged into the Paraguay River during periods of food and drought. *Environ. Toxicol.*, **16**: 113-116.

- Ordinance**<sup>1</sup> 7. *State Newspaper*. 1986. No 96.
- Ormrod, D. P.**, 1988. Effect of trace element contamination of plants. – In: Treshow, I. (Ed.), *Air Pollution and Plant Life*, *Hidrometeoizdat*, Leningrad, pp. 327-356. (Ru).
- Rank, J. and M. Nielsen**, 1998. Genotoxicity testing of wastewater sludge using the *Allium cepa* anaphase-telophase chromosome aberration assay. *Mutat. Res.*, **418**: 113-119.
- Sabti, K.**, 1989. *Allium* test for air and water borne pollution control. *Cytobios*, 58: 71-78.
- Schmid, W.**, 1975. The micronucleus test. *Mutat. Res.*, **31**: 9-15.
- Smaka-Kinkl, V., P. Stegnar, M. Lovka and M. Toman**, 1996. The evaluation of waste, surface and ground water quality using the *allium* test procedure. *Mutat. Res.*, **368**: 171-179.
- Staykova, T., E. Ivanova and I. Velcheva**, 2005. Cytogenetic effect of heavy-metal and cyanide in contaminated waters from the region of southwest Bulgaria. *Journal of Cell and Molecular Biology*, **4**: 41-46.
- Tzonevski, D., K. Sapundzhiev and E. Vodenicharov**, 1998. Studying the contents of lead and cadmium in the blood of children up to 15 years old from the region of the Non-Ferrous-Metal Works near Plovdiv. *Higiiena i zdraveopazvane*, **2/3**: 20-22. (Bg).
- Vodenicharska, Ts., I. Petrov and F. Razboinikova**, 1992. A study for heavy metal (lead, cadmium, zinc, copper, manganese) contamination among the population from the 3<sup>rd</sup> Metallurgical Base region. *Higiiena i zdraveopazvane*, **2**: 59-62. (Bg).

*Received February, 20, 2008; accepted for printing March, 17, 2008.*